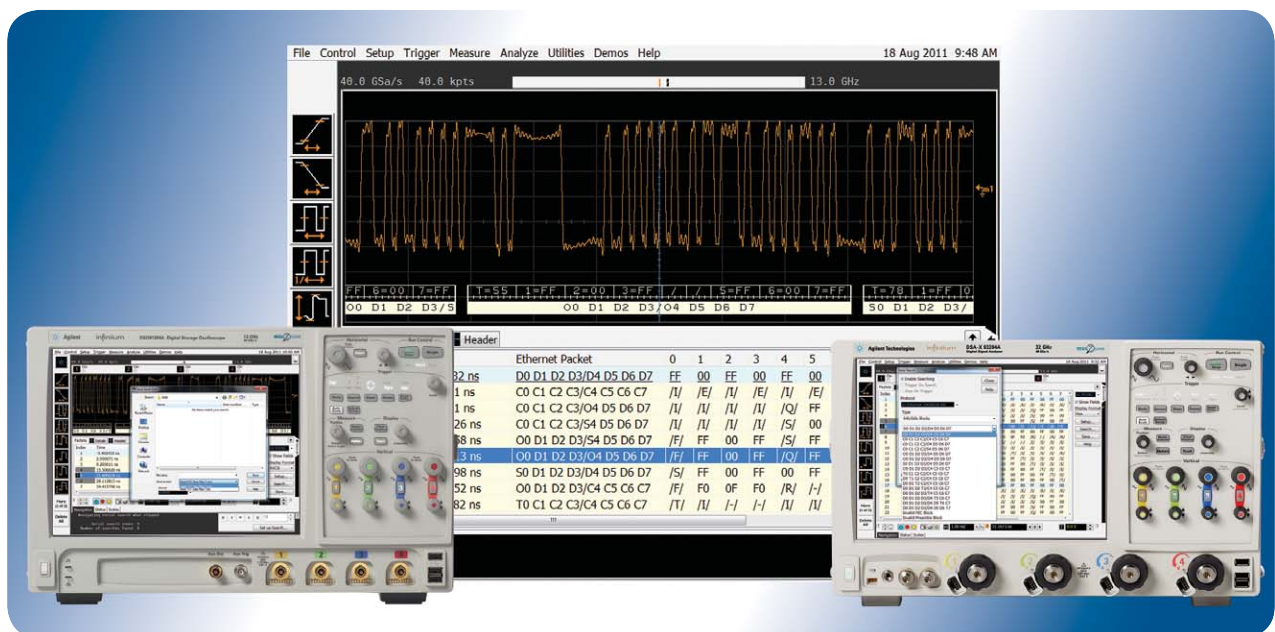


N8815A Infiniium 64b/66b 10Gbase-KR Ethernet Decoder Software for the 90000A and 90000 X-Series Oscilloscopes

Data Sheet



Introduction

64b/66b encoding is a principal line code that is used in data networking and transmission. 64b/66b encoding is the principal encoding scheme behind the 10Gbase-KR (x1/x4) technology as it achieves DC balance across a serial stream. The 64b/66b encoding also has less overhead than the 8b/10b encoding scheme.

Agilent Technologies N8815A Infiniium protocol viewer software for 10 Gbase-KR Ethernet is the only 64b/66b protocol analyzer technology available on a real time oscilloscope, providing time-correlated views of physical layer and transaction layer errors.

You get packet-level decode for 64b/66b Ethernet signals built into a real-time oscilloscope. This software provides you with a fast, easy way to isolate signal integrity problems from logic-level coding errors simultaneously on up to four lanes of serial data streams. This capability allows you to test, debug and characterize your designs to the logic and link layer. The N8815A Infiniium protocol analyzer software is designed to work with 10 Gbase-KR Ethernet technologies. It also comes with the unique ability to identify PRBS signal lengths to verify the correct signals are being passed through the DUT.



Agilent Technologies

Features

The N8815A Infiniium protocol viewer software offers several features to simplify the validation of your 64b/66b designs:

- Setup wizard for quick setup, configuration and test
- Packet-level decode of primitives as well as link and transaction layers
- Serial data analysis with 64b/66b bit streams
- Serial data analysis with PRBS detect
- Decode of scrambled and unscrambled symbols
- Quad-directional symbol and packet level decode
- Simultaneous display of packet/ symbol lists and waveform overlay
- Capability to save symbol and packet data lists to csv and .txt files
- Packet decode details tab provides detailed information on packets
 - information on packets
 - Channel information
 - Listing index
 - Link primitive type
 - Control symbols
 - Reserved-bit settings
 - Data payload popup
 - CRC
 - Packet length
- Payload display shows data payload
- Unique packet-waveform correlation marker “blue line” makes it easy to scroll through waveforms to view synchronized packet and symbol lists
- Comprehensive serial search capabilities
 - Trigger and stop on search
 - Primitive, control symbol and packet search capability

Comprehensive decode Capability

With the N8815A Infiniium 64b/66b protocol analyzer software, you can use the same oscilloscope you use for everyday debugging and signal quality testing to perform protocol-level viewing. The software automatically decodes symbols, packets and primitives and provides informative results. It includes decode of reserved bit settings during training sequences and speed negotiation, greatly simplifying debugging of link training failures.

Some of the difficulties in validating 10 Gbase-KR communication links are determining if link failures or instability is due to electrical problems or logic-level problems. The N8815A Infiniium 64b/66b protocol analyzer software allows you to analyze the root cause of these issues with a single piece of test equipment.

Easy measurement setup

The N8815A Infiniium 64b/66b protocol analyzer software uses the Serial Data Wizard to simplify setup of the clock recovery algorithm used to decode the various speeds of serial traffic that it supports. The wizard guides you quickly through the steps required to set up and perform symbol and packet-level decode.

N8815A is compatible with numerous clock recovery algorithms including first and second order PLL, constant, and explicit clock recovery. The N8815A is also compatible with Infiniium's Serial Data Equalization software, making it possible to decode signals even on equalized data.

To further simplify the decoding setup process, the N8815A includes an AUTO SETUP (see figure 2) button that will automatically setup the entire decoding setup. This includes clock recovery, memory depth, thresholds, and data rate. After the AUTO SETUP is complete, the setup can be adjusted using the manual setup button (see figure 3).

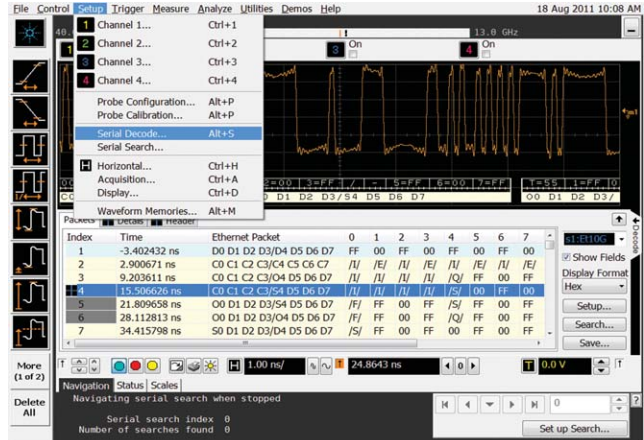


Figure 1: The 64b/66b setup is conveniently located in the "Setup" tab of the Infiniium 90000 and 90000 X-Series oscilloscopes

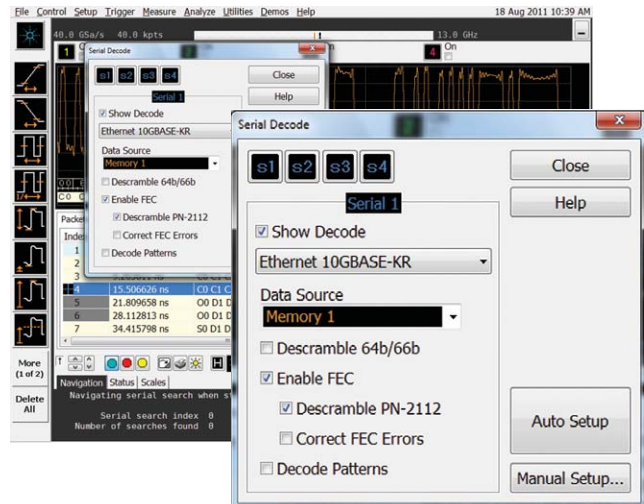


Figure 2: The 64b/66b setup menu includes an "Auto Setup" tab, which enables you to begin decoding 10Gbase-KR signals in less than 30 seconds

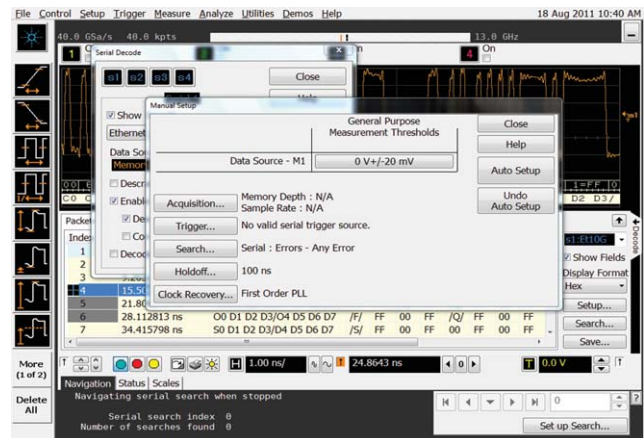


Figure 3: Customize your decoding setting using the manual tab. Image above shows the manual menu option.

Synchronized analog and digital display

The N8815A 64b/66b decode software provides the ability to perform 64b/66b bit and 8b/10b based packet decoding via an Agilent exclusive technique to capture and display serial data synchronized with the analog view of traffic of a serial data stream. Decode is displayed directly on the analog waveform as well as in the decode list with associated time and index displays.

In conjunction with the decode list, using the multi-grid waveform display you can simultaneously display analog bi-directional waveforms with corresponding decode listings.

The unique packet-waveform correlation marker “blue line” allows for convenient and intuitive correlation of analog and digital domains. You can easily scroll to analog anomalies that are visually distinct, making navigating and checking for errors easy, even for industry leading record depths.

The expandable decode list provides an extendable indexed view of packet decode for users who are more accustomed to logic analyzer “vertical style” packet decode traffic listings. The list includes color-coded packet types for easier visual searching of traffic patterns as well as a blue highlight that shows the packet that corresponds to the “blue line” in the waveform view. The side bar also shows how much of the waveform display is on the screen by providing a gray background on the index field, as shown in Figure 5.

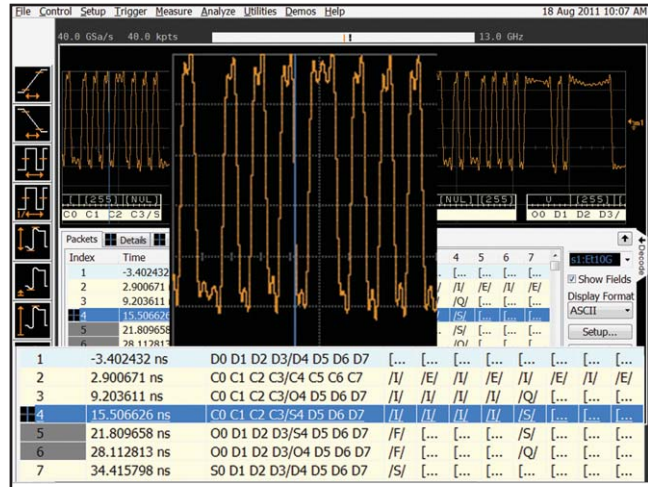


Figure 4: The 64b/66b includes a viewing pane and alignment marker, making it easy to identify problems in the system

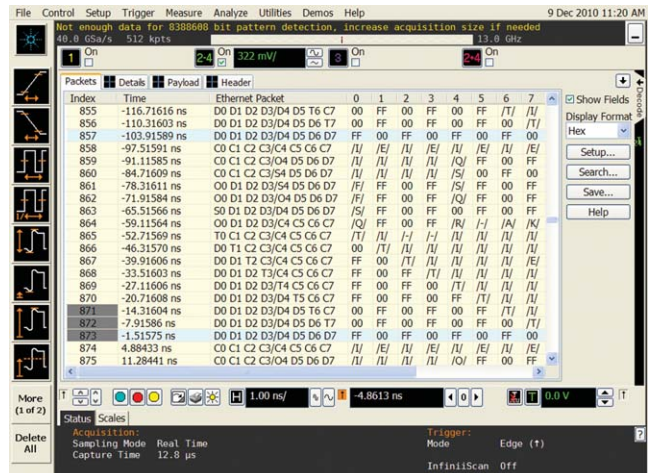


Figure 5: Maximize the window pain to see the full details of your design.

Comprehensive search capabilities

The N8815A 64b/66b ethernet 10Gbase-KR protocol analyzer software includes a powerful serial search tool which allows you to search for a pattern that is a primitive, control symbol or packet.

The search capability also includes a comprehensive packet search and trigger capability that allows you to specify search conditions like errors or data packets. This allows you to specify desired trigger conditions and makes finding errors or packet types easy by eliminating the need to do manual

Searches of very long records.

- Errors
 - Any error
 - Unknown Control Sequence
 - Unknown Block Type
 - Invalid Ordered Set
 - Invalid FEC Block
 - Invalid 64b/66b Preamble
- 64b/66b blocks
 - Numerous blocks as specified by the 10Gbase-KR specification
 - Example: D0 D1 D2 D3 /D4 D5 D6 D7
- Pattern Detection
 - PRBS7
 - PRBS15
 - Square Wave
 - Compliance Pattern
 - Many more

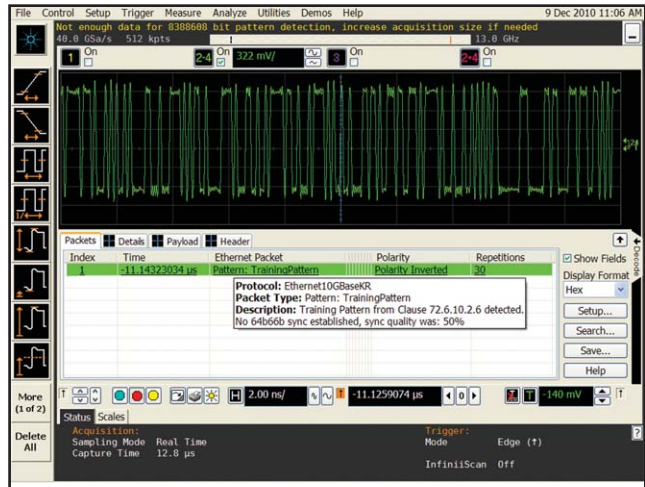


Figure 6: Training sequence of 10Gbase-KR ethernet

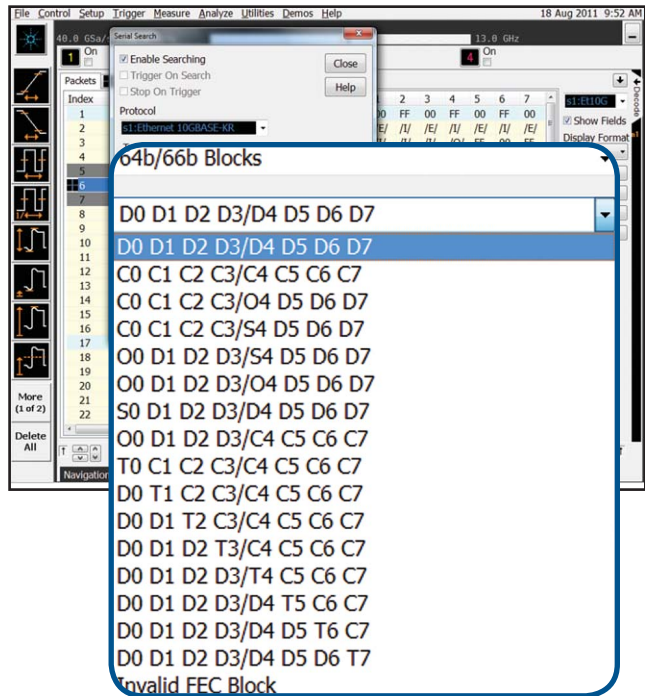
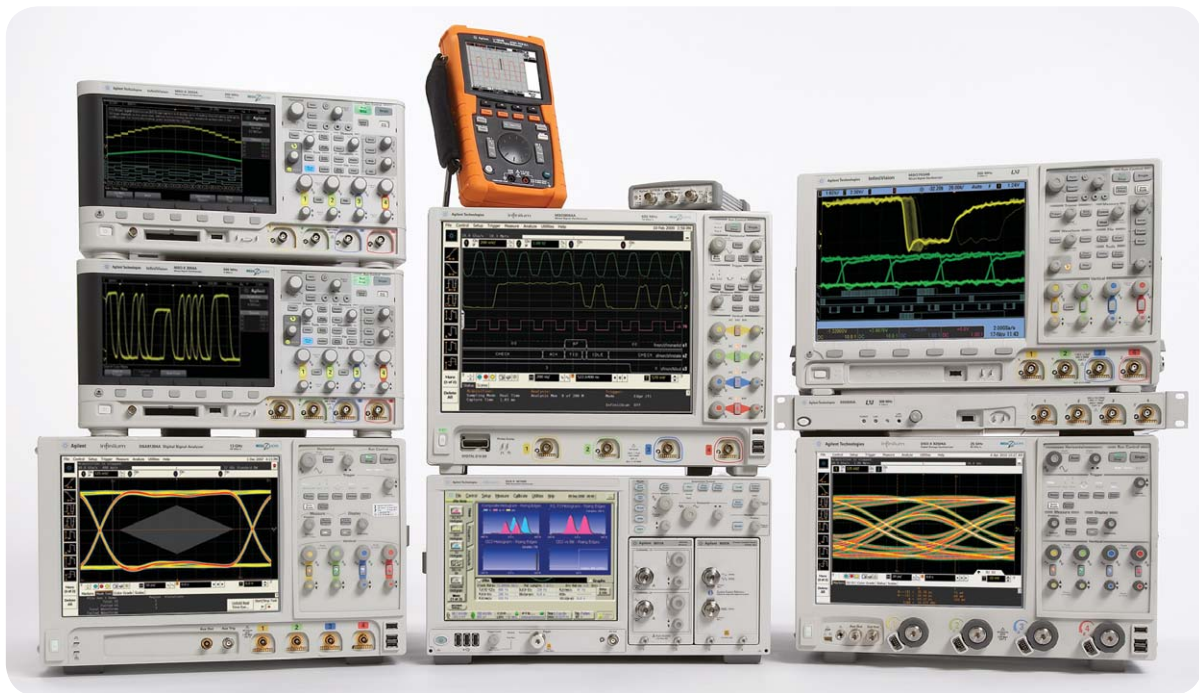


Figure 7: Search for specific blocks related to 64b/66b

Oscilloscope compatibility

The N8815A Infiniium protocol analyzer software is compatible with Agilent 90000 Series oscilloscopes with operating software revision 3.10 or higher (Windows XP Pro). For oscilloscopes with earlier software revisions, free upgrade software is available at: http://www.agilent.com/find/infiniium_sw_download

	Software revision	Compatible
90000 X-Series	3.10 or later	YES
90000A	3.10 or later	YES
9000A	NONE	NO



Agilent Technologies Oscilloscopes

Multiple form factors from 20 MHz to >90 GHz | Industry leading specs | Powerful applications



Agilent Email Updates

www.agilent.com/find/emailupdates

Get the latest information on the products and applications you select.



www.axistandard.org AdvancedTCA® Extensions for Instrumentation and Test (AXIe) is

an open standard that extends the AdvancedTCA for general purpose and semiconductor test. Agilent is a founding member of the AXIe consortium.



www.lxistandard.org

LAN eXtensions for Instruments puts the power of Ethernet and the Web inside your test systems. Agilent is a founding member of the LXI consortium.



www.pxisa.org

PCI eXtensions for Instrumentation (PXI) modular instrumentation delivers a rugged, PC-based high-performance measurement and automation system.

Agilent Channel Partners

www.agilent.com/find/channelpartners

Get the best of both worlds: Agilent's measurement expertise and product breadth, combined with channel partner convenience.

Agilent
Advantage
Services



Agilent Advantage Services is committed to your success throughout your equipment's lifetime. We share measurement and service expertise to help you create the products that change our world. To keep you competitive, we continually invest in tools and processes that speed up calibration and repair, reduce your cost of ownership, and move us ahead of your development curve.

www.agilent.com/find/advantageservices



www.agilent.com/quality

Windows® is a U.S. registered trademark of Microsoft Corporation.

www.agilent.com

www.agilent.com/find/10Gbase-KR

For more information on Agilent Technologies' products, applications or services, please contact your local Agilent office. The complete list is available at:

www.agilent.com/find/contactus

Americas

Canada	(877) 894 4414
Brazil	(11) 4197 3500
Mexico	01800 5064 800
United States	(800) 829 4444

Asia Pacific

Australia	1 800 629 485
China	800 810 0189
Hong Kong	800 938 693
India	1 800 112 929
Japan	0120 (421) 345
Korea	080 769 0800
Malaysia	1 800 888 848
Singapore	1 800 375 8100
Taiwan	0800 047 866
Other AP Countries	(65) 375 8100

Europe & Middle East

Belgium	32 (0) 2 404 93 40
Denmark	45 70 13 15 15
Finland	358 (0) 10 855 2100
France	0825 010 700*
	*0.125 €/minute
Germany	49 (0) 7031 464 6333
Ireland	1890 924 204
Israel	972-3-9288-504/544
Italy	39 02 92 60 8484
Netherlands	31 (0) 20 547 2111
Spain	34 (91) 631 3300
Sweden	0200-88 22 55
United Kingdom	44 (0) 131 452 0200

For other unlisted countries:

www.agilent.com/find/contactus

Revised: June 8, 2011

Product specifications and descriptions in this document subject to change without notice.

© Agilent Technologies, Inc. 2011
Published in USA, September 21, 2011
5990-8968EN



Agilent Technologies